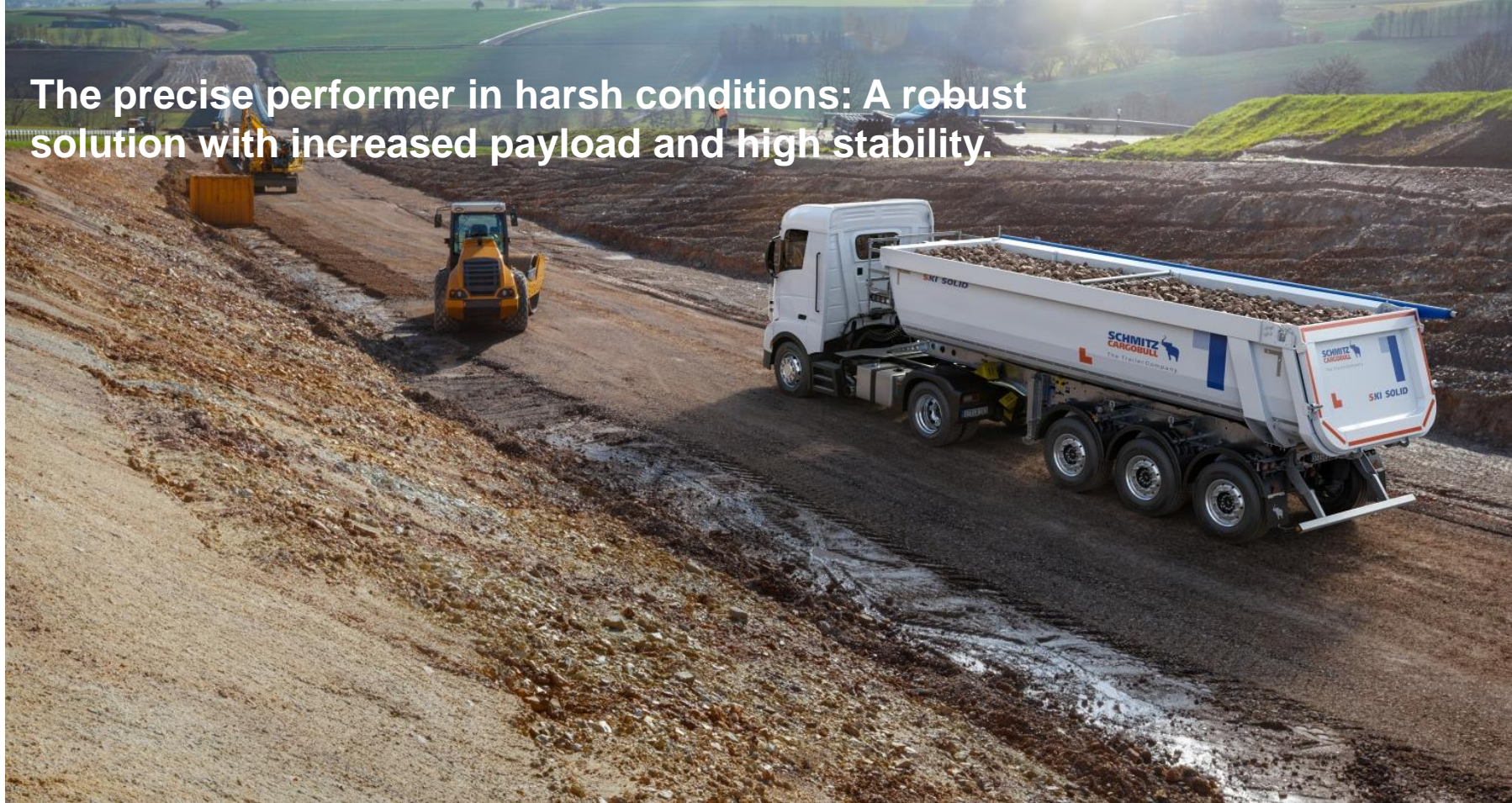




Delivering Performance with the S.KI SOLID

IAA Pre-Press Conference – 13th June, 2024

The precise performer in harsh conditions: A robust solution with increased payload and high stability.



Tipper S.KI SOLID

Steel rounded body with 24m³ load volume, light, robust and efficient

- Universally applicable 24m³ steel rounded body with safety and handling optimised equipment – **for time-saving, safe and convenient operation by the driver**
- **High payload and cost-effectiveness** thanks to weight-optimised frame and body design
- Can be used universally for a wide range of transport tasks on the construction site
- **Avoidance of empty runs** thanks to high load flexibility for all types of bulk materials
- **Safety and handling features:** wireless body and reversing camera system, side tilt assistant, pneumatic underride guard with reset-to-ride function, electric sliding roof



Light and ergonomic



Robust and efficient



High loading volume

Efficient transport solutions for building materials are now 100% smart

All tipper semi-trailers come with TrailerConnect® telematics as standard

Standard configuration includes:

- Fleet management and real time position tracking
- Tyre pressure monitoring using the display in the cab, the beSmart App or extended alarm functionality via the TrailerConnect® portal
- Powered by the TrailerConnect® CTU

Optional: Upgrade to several additional functions

- Digital on-board weighing system – beSmart app
- Brake pad wear monitoring and alerting system
- Detailed EBS information about status and load
- Powered by the TrailerConnect® CTU Pro



Digital on-board weighing system

With operation via app and interface to telematics

Optimum loading



Ready for use in
5 seconds



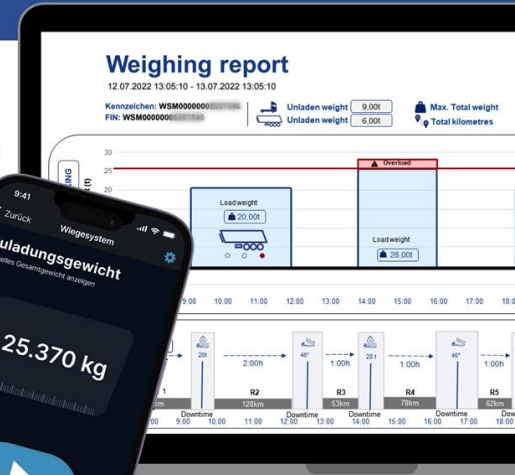
saves time, fuel
and CO2 emissions



increases efficiency
and profitability

Send weighing data in real time

- TrailerConnect® Portal
- beSmart APP



Digital on-board weighing system



With operation via app and interface to telematics

- **Very high accuracy** (deviations of $\pm 1\%$ in the weighing range of 20-30 tonnes). **Calibrated ex works.**
- **Weighing data** can be called up **immediately after the weighing process** on the display in the vehicle or in the TrailerConnect® portal.
- Forward the **weighing data to third parties** or process the data directly in the **TrailerConnect® portal.**
- **Optimum loading** protects drivers, loaders and transport companies from legal penalties, reduces wear and tear on the vehicle and road and increases efficiency and profitability.
- There is no need to drive to a stationary scale. **This saves time, fuel and CO₂ emissions.**
- The weighing system works regardless of the equipment and brand of the tractor unit.

