

## Simply retrofit TPMS

The cost-effective and reliable solution with Schmitz Cargobull

The tyre sensor is simply attached to the rim in a plug-in pocket with a strap. It transmits tyre pressure and temperature data via radio (433 MHz) to the pre-configured TrailerConnect® CTU control unit. Up to six sensors in the chassis are monitored simultaneously by the telematics system. When changing a wheel, the new sensor can be quickly and easily registered in the telematics monitoring system. The battery integrated in the sensor has a service life of four to five years.



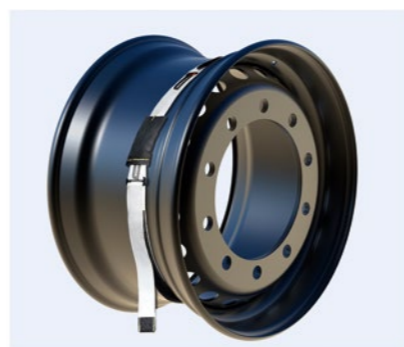
**SCHMITZ  
CARGOBULL**   
The Trailer Company.



The equipment for the complete undercarriage is supplied as a set



The sensor is simply inserted into the belt pocket



Secure fastening of the belt in the tyre directly on the rim (schematic diagram)

### Order online now

Set of 6 TPMS 19.5 inch  
Set of 6 TPMS 22.5 inch  
Telematics control unit CTU

ID 1486730  
ID 1486709  
ID 1281893

TPMS set for **19.5**  
inch rims



TPMS set for **22.5**  
inch rims



>>> [www.cargobull-serviceportal.en](http://www.cargobull-serviceportal.en)

### Talk to your service partner

Your contact for quick and uncomplicated retrofitting - even at your next service appointment. Europe-wide support from the comprehensive network of authorised and trained service partners in over 40 countries.

>>> [www.cargobull.code/en/trailer-services/service-partner-search](http://www.cargobull.code/en/trailer-services/service-partner-search)



## More trailer uptime with correct tyre pressure

Equip your trailers with the tyre pressure monitoring system





Retrofit safety and save costs. Our TPMS keeps your trailers running reliably. The cost-effective solution for all Schmitz Cargobull trailers. Ideal for all vehicles with TrailerConnect® telematics ex works<sup>1</sup>

### Your advantages

- More trailer uptime - reduces breakdowns and downtimes
- Improved safety - pressure deviations are detected and tyre damage is reduced
- Low operating costs - increased mileage and fewer tyre changes
- Reduces fuel consumption and CO<sub>2</sub> - optimum tyre pressure ensures low fuel consumption and CO<sub>2</sub> emissions
- All vehicle information at a glance in the TrailerConnect®portal - for vehicles with TrailerConnect® telematics
- Simple and cost-effective retrofitting for all trailers - compatible in conjunction with the CTU control unit\* from TrailerConnect®



The telematics display options for TPMS

- TrailerConnect® telematics portal 
- beUpToDate app (haulage company) beSmart App (driver) 
- Control panel transport refrigeration unit S.CU 
- Truck dashboard (vehicle-dependent option) 

Tyre pressure at a glance - your costs under control

The optimum tyre pressure can be retrofitted. With the tyre pressure monitoring system, the tyre pressure and temperature are measured precisely for each wheel in the trailer chassis. Thanks to TrailerConnect® telematics, the values are conveniently displayed in the TrailerConnect® portal and in the Schmitz Cargobull apps. This increases safety for drivers, dispatchers and managers. This allows you to keep costs under control and increase the trailer uptime of your fleet.



TPMS retrofitting pays off immediately



**3.655 l diesel**

Fuel savings through optimum tyre pressure compared to additional consumption with a pressure difference of 0.5 bar<sup>1</sup>



**€ 800 personnel costs**

Time saving thanks to automatic pressure testing in the TPMS instead of manual measurements on the vehicle<sup>1</sup>



**Up to 70 % less tyre wear**

Depending on the level of pressure deviation<sup>1</sup>



**Up to 27 % more puncture protection**

Incorrect tyre pressure is responsible for many truck breakdowns

<sup>1</sup>Assumptions: average mileage 85,000 km/p.a.; deviation from optimum tyre pressure: 0.5 bar. Source: Influence of a tyre pressure monitoring system on elementary vehicle characteristics; Steven Christoph Henne; Westfälische Hochschule Bocholt, Germany 2023



100% Smart – RDKS ready

Our trailers are prepared ex works



Retrofitting Schmitz Cargobull trailers is **particularly cost-effective** if the appropriate CTU telematics unit is already installed ex works. The SCU telematics unit is prepared for the use of **wireless tyre sensors** as standard. You can start active tyre pressure monitoring with TrailerConnect® immediately after fitting the sensors.

Since 2019, Schmitz Cargobull has been equipping S.KO refrigerated box semi-trailers, S.CS curtainsider semi-trailers and S.BO dry freight trailers with **TrailerConnect® telematics** ex works. If you want to know whether your trailer is already prepared for TPMS, simply ask your Schmitz Cargobull service partner.



RDKS becomes EU standard

**From 01.07.2024**, TPMS equipment will be mandatory for all new vehicles in Europe with **UN ECE R141**. Take advantage of the benefits for your fleet and retrofit existing vehicles with a tyre pressure monitoring system.



Think sustainably - double the profit

**Lower CO2 emissions** thanks to reduced fuel consumption. **Lower environmental impact** thanks to less tyre wear with longer running times. Invest systematically in environmental protection and reduce your operating costs at the same time.