

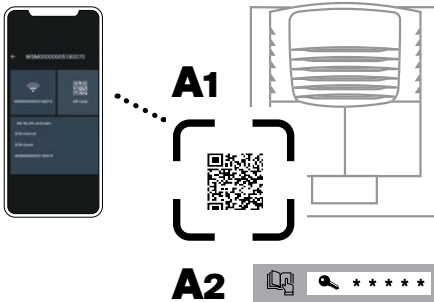


beSmart check your trailer with the app!

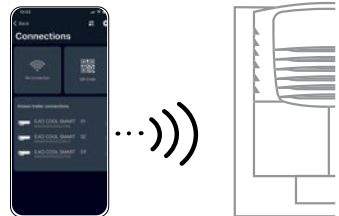
Install the beSmart app



A Connection Setup



B Choose trailer



Download this information as a
PDF in your language



More on YouTube





Rear door locking system: Control the PIN-protected door locking system easily and conveniently via the beSmart App.



Brake pad wear monitoring: Avoid breakdowns and plan your workshop visits efficiently. The beSmart app shows you the status of your brake pads.



Tyre status monitoring: Avoid flat tyres and increased tyre wear by keeping an eye on tyre pressure and tyre temperature.



Axle load: Improve safety on the road and reduce the wear and tear on your trailer. Check via the beSmart App whether the axle load matches the delivery paperwork.



Monitoring and control of the cooling unit: Keep an eye on the cooling unit's operating data.



View the current temperature and get warned in case of temperature deviations directly from your smartphone.



Control the temperature printer directly from your smartphone.

