



Delivering Performance with the S.KOe COOL

IAA Pre-Press Conference – 13th June, 2024

Cool and clever: our solutions for perfect refrigerated transport – emission free cooling performance



Fully electric semi-trailer S.KOe COOL

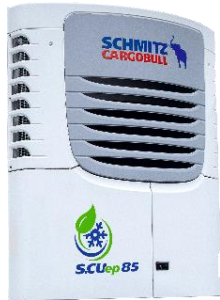
The emission-free S.KOe COOL from series production:
The refrigerated trailer solution of tomorrow

- First **OEM with type approval** for the fully-electric reefer semi-trailer S.KOe COOL with generator axle
- **Best possible insulation ex works** in series production
- Every trailer **equipped with Tyre Pressure Monitoring System sensors** and **TrailerConnect® control** unit as standard



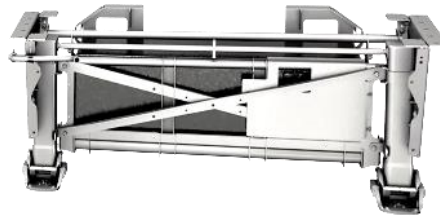
Fully electric semi-trailer box S.KOe COOL

System components of the S.KOe COOL



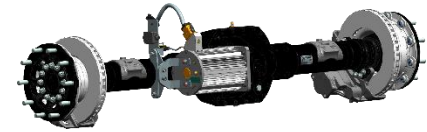
**Electric Cooling
unit S.CU ep85**

100% performance – Zero emissions.
With the same performance as the
proven diesel driven S.CU



**High-voltage
Battery**

4.5 -18h self-sufficient operation
and only 2h charging time



e-axle

Recharging the battery during
driving or braking (recuperative)

Aerodynamic EcoPack storage

Energy savings for the entire truck-trailer combination

- ◆ Aerodynamically shaped storage box ensures **optimised air flow**
- ◆ **Storage space** for pallets and load securing equipment
- ◆ Incl. **spare wheel holder**



New reversing camera

Increase user-friendliness for drivers

- **Increase safety** when reversing
- **Saves time** on narrow ramps
- **Avoidance of collision damage**
- No cable connections, **everything via Bluetooth connection** through transmitter and receiver



Immobiliser

Protection against unauthorised movement

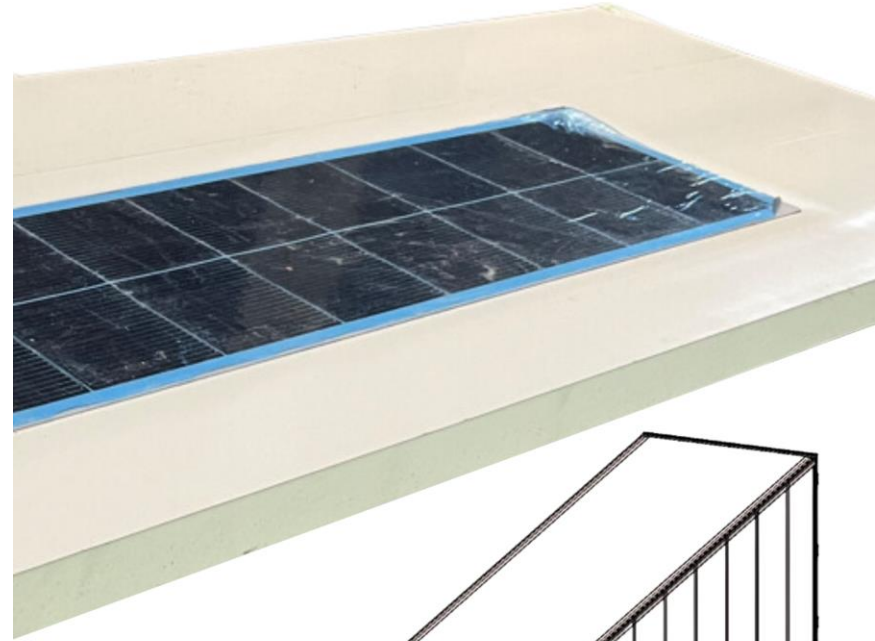
- **Protection against theft**
- Trailers parked in public places are increasingly being stolen. We minimise this risk with the Immobiliser
- **Increased process security**, as only authorised carriers can move the trailer
- Connection to **TrailerConnect® telematics**



12V solar panel for cooling unit starter battery

For increased accessibility

- ◆ **Increased availability** of the additional functions that are supplied with energy by the cooling unit battery (Example: Door locking system)



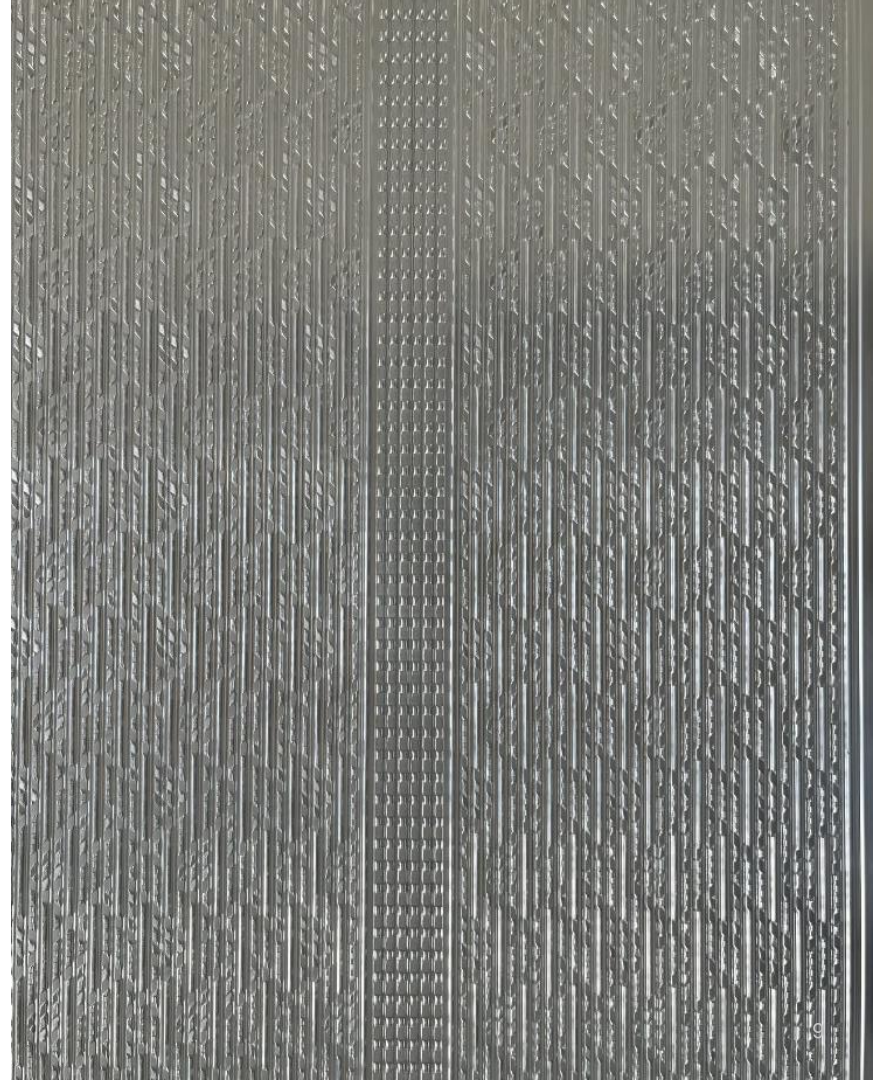


Multi-functional floor

Now PIEK certified



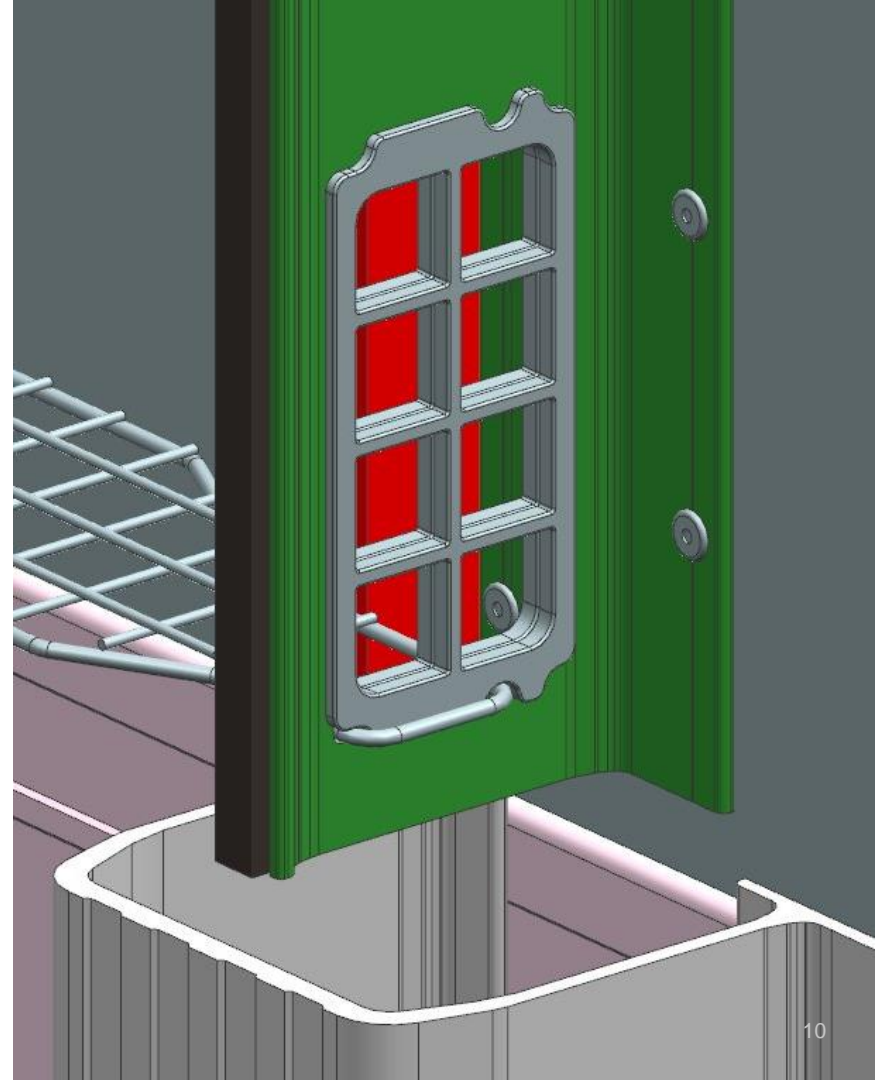
- Enabling deliveries early in the morning, late in the evening and in residential areas
- Optimisation of **slip resistance** and **noise emission**



Circulation wall protective grille

Protective grille to prevent waste, leaves or dirt from being sucked in by the cooling unit

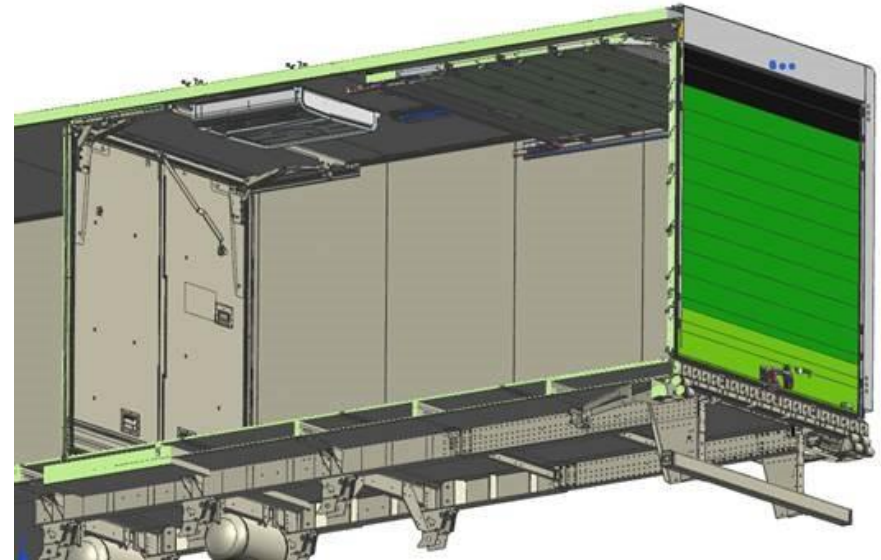
- ◆ **Avoidance of contamination** of the cooling unit
- ◆ **Facilitating the cleaning** of the trailer



S.KO COOL with roller shutter and S.CU V2.0 MultiTemp

New position of the additional evaporator

- **Increased flexibility** of the S.KO COOL
- No risk of short-circuiting the air flow, **best possible air circulation**
- Partition wall can be moved up to the evaporator, **best possible utilisation of the cargo space**
- Everything from a **single source**
- Formed cooling unit pipes in the roof



High security S.KO COOL

TAPA TSR 2023 certificate update

- ◆ **TAPA-ready certification** according to the latest requirements
- ◆ **Saves time**, as no additional retrofitting or approvals are required



S.CU d80 - entry-level model for the volume market



Consumption

Low fuel consumption via variable speed control of the diesel engine



Technology

Robust 4 cyl. diesel engine for use in all markets, especially with lower diesel quality



Reliability

- All product updates are included
- Extensive validation
- No external non-return valve



Sustainability

- Less refrigerant
- Hermetised refrigeration circuit



Cooling capacity

Specific cooling capacity for the mid-range transport cooling unit segment



Economy

Lower maintenance costs:

- Oil change interval: 3,000 Bh
- No belt changes
- Elimination of shaft sealing
- Generator is maintenance-free
- Maintenance components are easily accessible



Comfort

Lowest noise volume on the market

- Silence Kit as standard
- Scroll compressor



Networking with TrailerConnect®

- Smart trailer functions integrated
- Incl. 2-way communication



Service

24-month service contract with proactive monitoring of the S.CU d80